



Living conditions and social outcomes in adults with cerebral palsy



ORIGINAL RESEARCH article

Front. Neurol., 21 October 2021 | <https://doi.org/10.3389/fneur.2021.749389>

Living Conditions and Social Outcomes in Adults With Cerebral Palsy



Katina Pettersson^{1*} and  **Elisabet Rodby-Bousquet^{1,2}**

¹Centre for Clinical Research, Uppsala University/Region Västmanland, Västerås, Sweden

²Department of Clinical Sciences, Lund University, Lund, Sweden

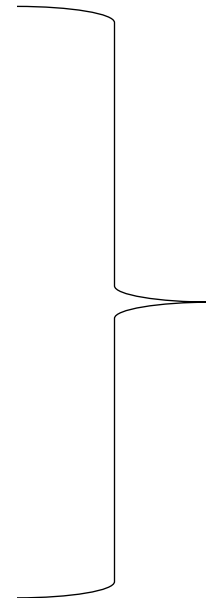


UPPSALA
UNIVERSITET

Living conditions and social outcomes



- Having a partner
- Type of housing
- Personal assistance
- Occupation
 - Full time
 - Part-time



- age
- sex
- GMFCS, gross motor function
- CFCS, communication ability





- Cross-sectional study
- Data from the Swedish adult cp-registry (CPUP), reported 2012 to 2019
- The latest PT/OT assessment of all adults born between 1943 to 2003





The Swedish Adult CPUP

Assessments

- GMFCS III-V – every year
- GMFCS II – every second year
- GMFCS I – every third year

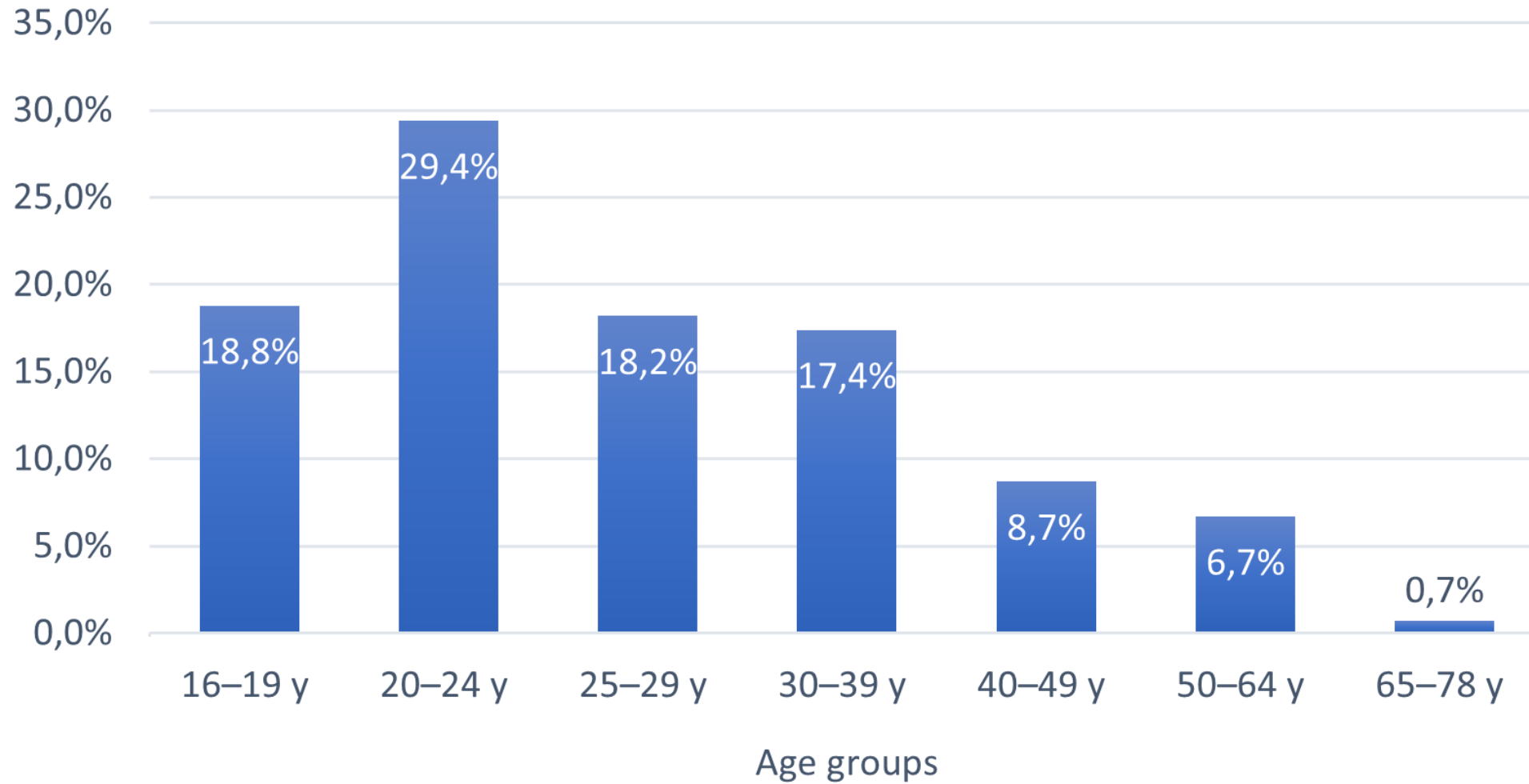


- 1888 adults ranging from 16-78 years
- Median age 25 years
- 54,6 % were males
- 76% had spastic CP



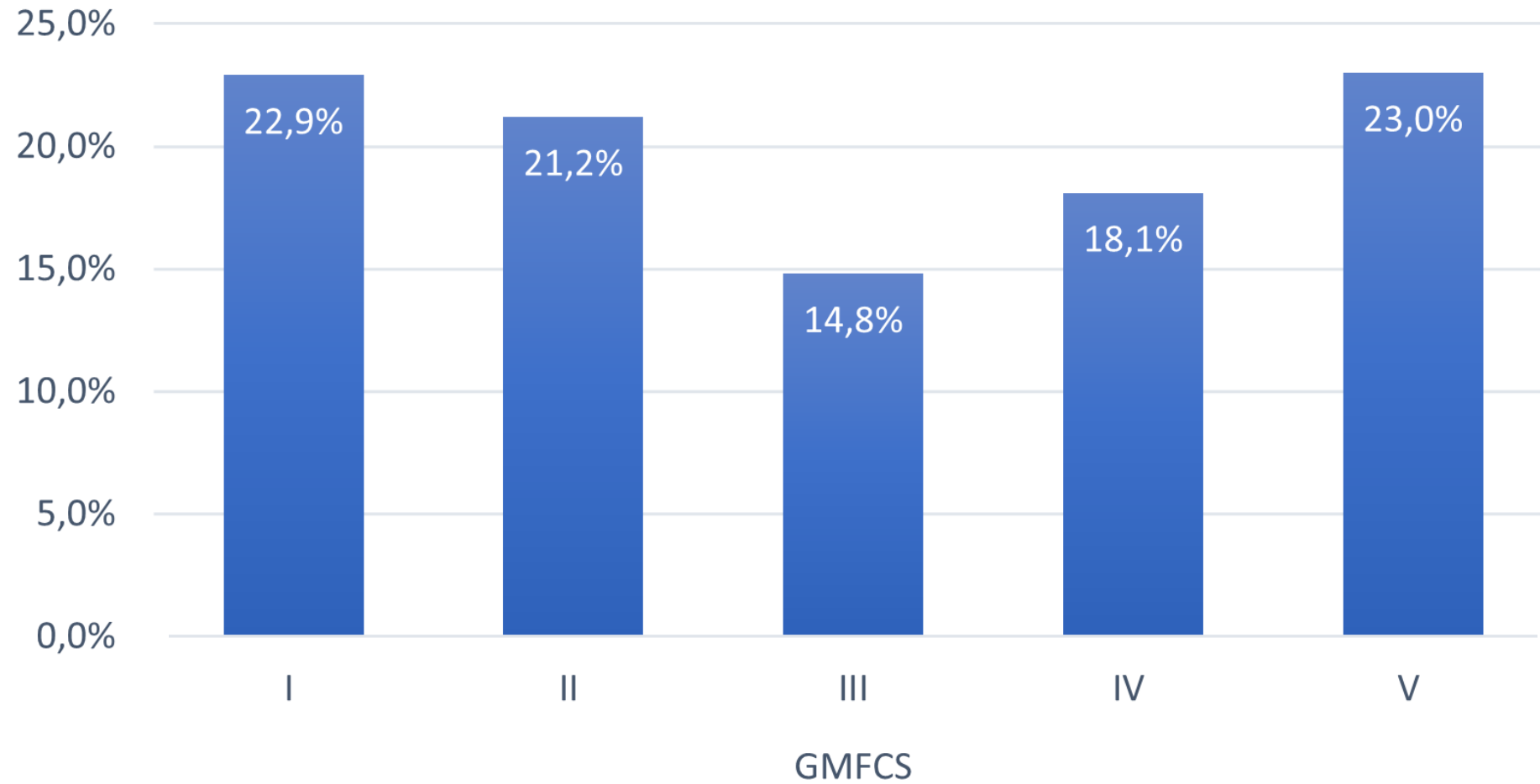


Age groups

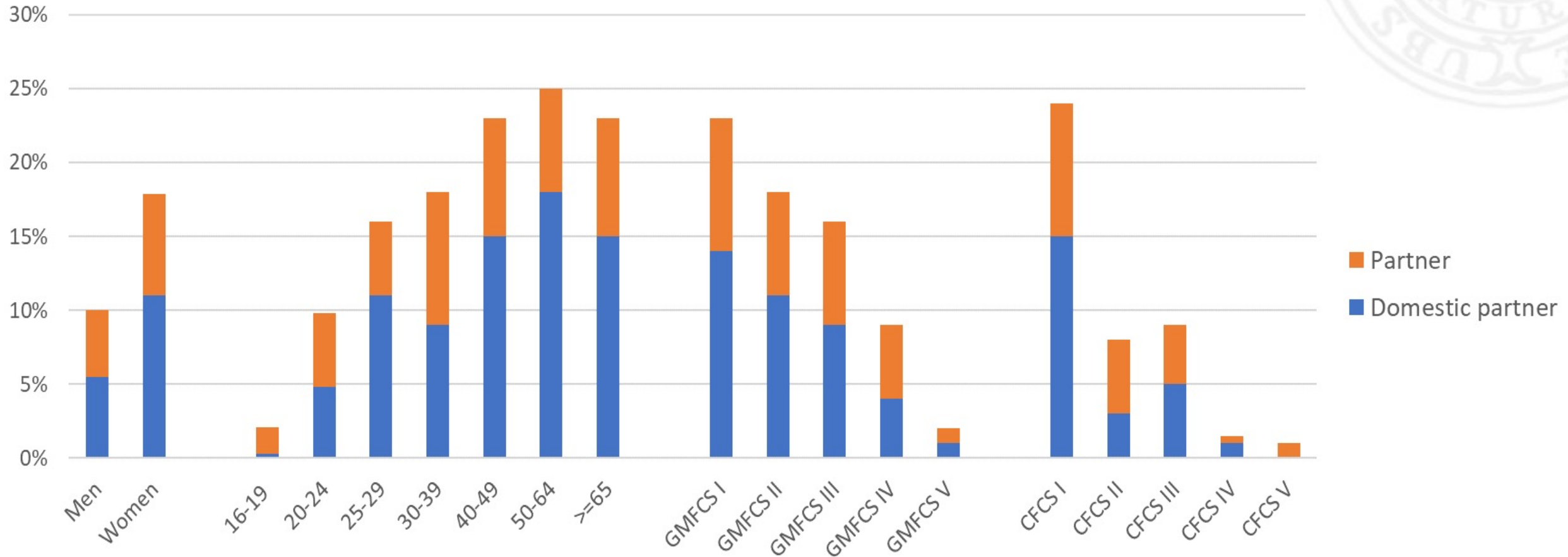




GMFCS

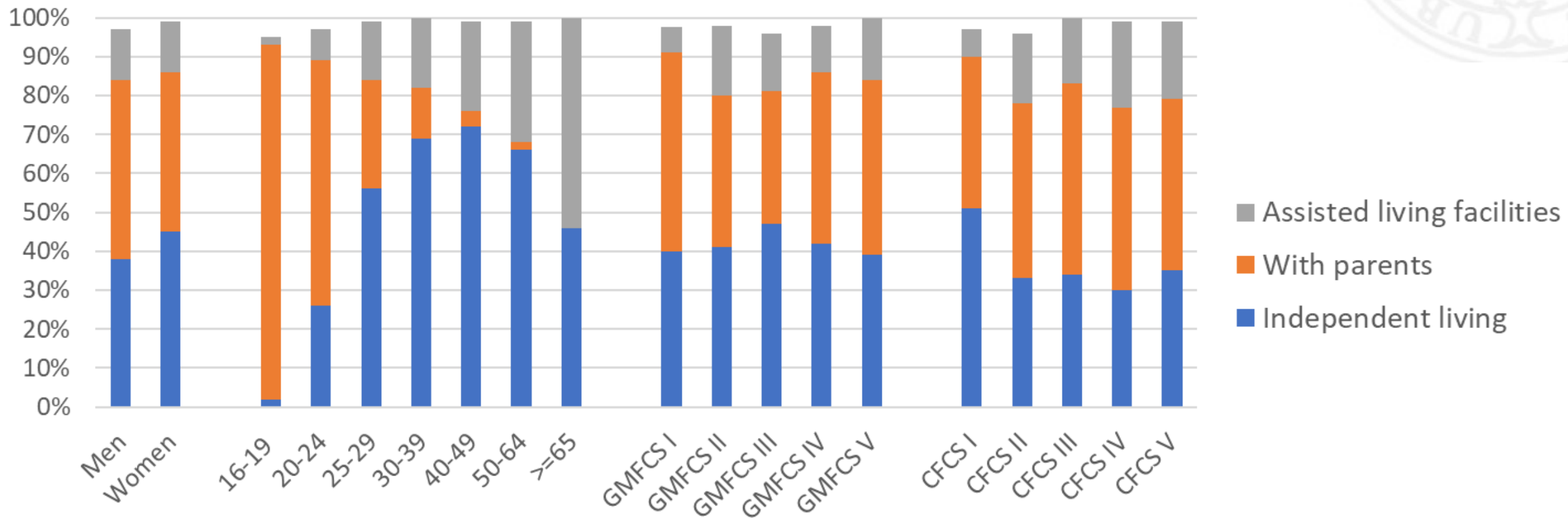


Partnership





Housing



Housing

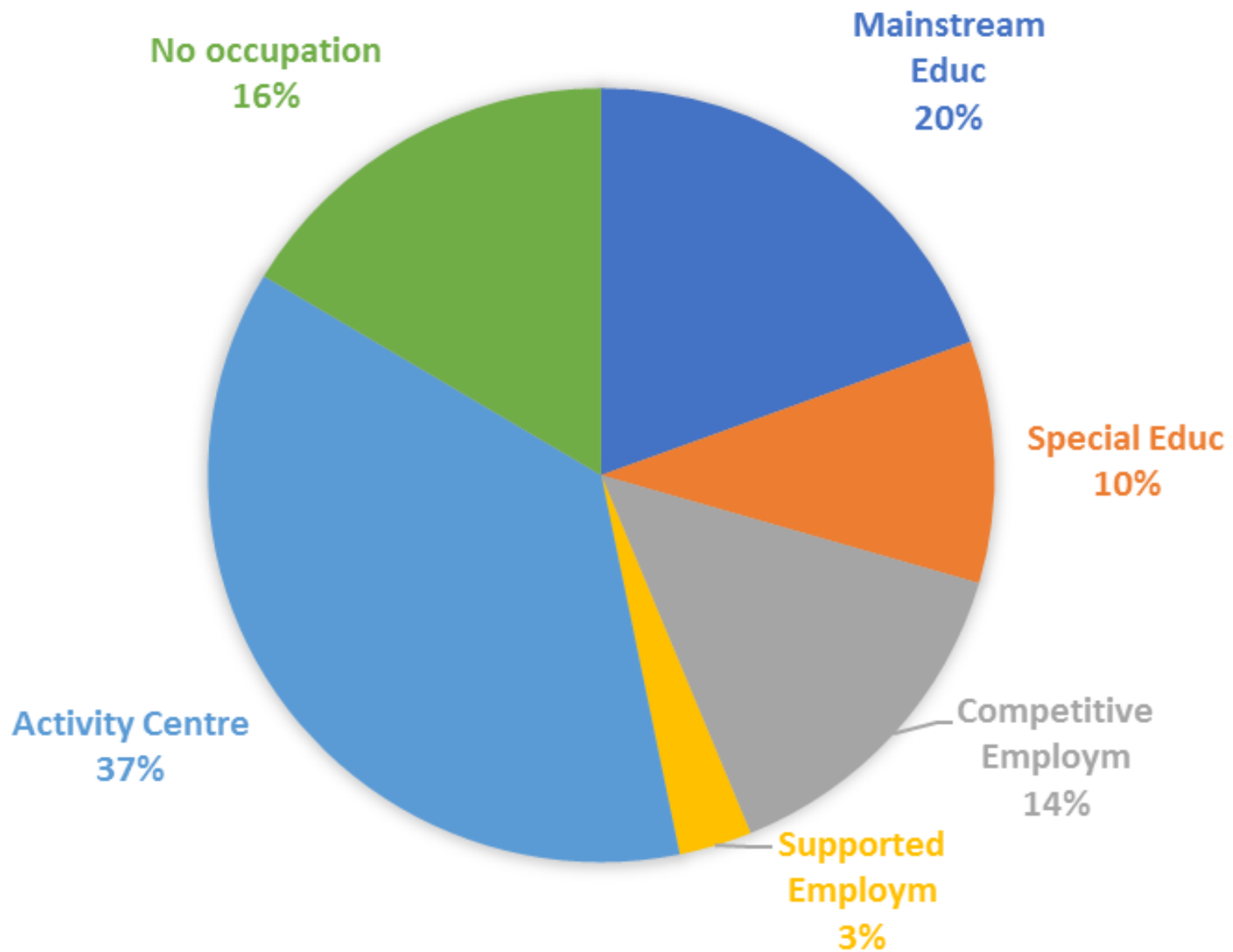
Independent living levels were almost equal in adults at GMFCS levels I and V

Personal assistance was the single most important factor for independent living

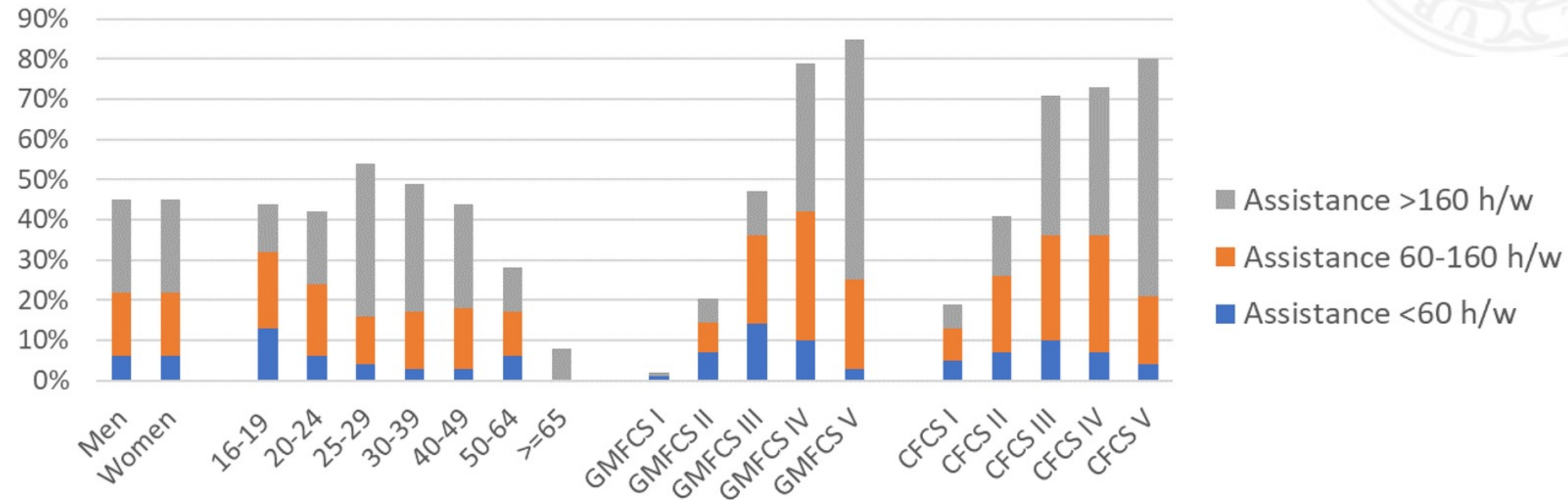
Assistance >160 h/w (OR 57.07, 95% CI 32.35–101)



Occupation



Personal assistance







UPPSALA UNIVERSITET

E-mail: katina.pettersson@regionvastmanland.se